

Yagi Antenna

400 - 512 MHz / 10 dBd Gain

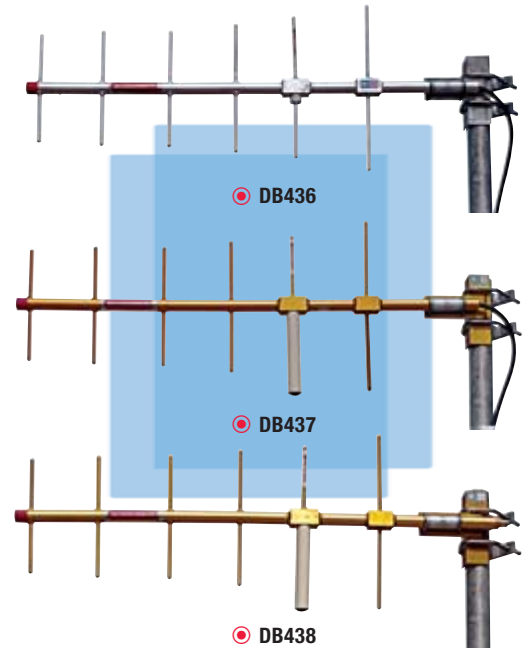


DB436, DB437 & DB438

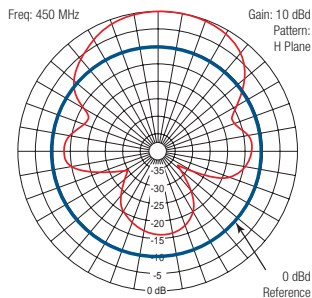
30-512 MHz

These 3 heavy duty Yagis give highly-directional coverage and good front-to-back ratios.

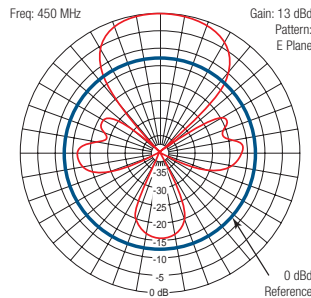
- **Sturdy Construction** — All 3 are made of high strength welded aluminum alloys. DB437 and DB438 have a gold anodized finish. On DB438 the connector is an N-Female boom mounted, while the others have N-Male pigtails.
- **Stacked Arrays** — 2 antennas provide 13 dBd gain and 4 antennas 16 dBd gain. Polarization can be vertical or horizontal, and the antennas can be mounted side-by-side or vertically. One wavelength of vertical separation is recommended.
- **Bi-Directional Pattern** — Antennas can be mounted on opposite sides of the tower, if desired.
- **Lightning Resistant** — Protection provided by direct ground.



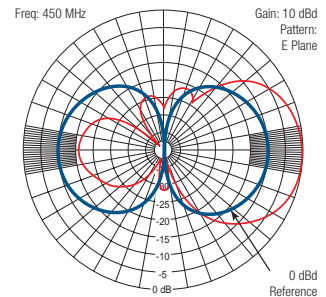
DB436, DB437 & DB438
Horizontal Pattern



DB436-2, DB437-2 & DB438-2
Horizontal Pattern



DB436, DB437 & DB438
Vertical Pattern



ELECTRICAL DATA

Frequency Ranges – MHz	A = 400-420, C = 450-470, D = 470-494, E = 488-512
Bandwidth – MHz	Same as above
VSWR	1.5 to 1 or less
Nominal Impedance – Ohms	50
Forward Gain (over half-wave dipole) – dBd	10
Polarization	Vertical or Horizontal
Maximum Power Input – Watts	250
Vertical Beamwidth (half-power)	44°
Horizontal Beamwidth (half-power)	60°
Front-to-Back Ratio – dB	16
Lightning Protection	Direct ground
Standard Termination	Captive Type N-Female on DB438. DB436 and DB437 have Type N-Male.

MECHANICAL DATA

Support Boom (aluminum) – in. (mm)	1 (25.4) OD with 0.083 (2.108) wall
Elements	Aluminum
Mounting Brackets	Galvanized steel
Maximum Exposed Area (flat plate equivalent) – ft ² (m ²)	0.45 (0.042) single, 0.90 (0.084)-2, 1.8 (0.167)-4
Lateral Thrust at 100 mph (161 km/hr) – lbf (N)	18 (80.7) single, 36 (160.1)-2, 72 (320.3)-4
Wind Rating:*	
Survival without Ice – mph (km/hr)	125 (201)
Survival with 0.5" (12.7 mm) Radial Ice – mph (km/hr)	90 (145)
Dimensions (HxL) – in. (mm)	14.5 (368.3) x 35 (889) single, 40 (101.6) x 35 (889)-2, 90 (2,286) x 35 (889)-4
Net Weight – lbs. (kg)	7 (3.18) single, 15 (6.8)-2, 30 (13.61)-4
Shipping Weight – lbs. (kg)	9 (4.08) single, 18 (8.16)-2, 40 (18.14)-4
Mounting Clamps	Stainless steel V-bolts

* Calculation of wind survivability does not include damage due to flying debris.

ORDERING INFORMATION

Use model number for correct frequency. Mounting clamps are included. Additional sized clamps can be special ordered. Order jumper cable separately. Note: DB437 and DB438 family of antennas are only available in 450-470 MHz (Ex: DB437-C and DB438-C).