



UMWD-06516-2DH

DualPol® Antenna

Decibel®
Base Station Antennas

- Continuous wideband operation 1710 to 2170 MHz
- State of the art radiating elements
- Excellent upper side lobe suppression for interference reduction
- Rugged, reliable design with excellent PIM suppression

ELECTRICAL

Frequency (MHz) :	1710 - 1880	1850 - 1990	1920 - 2170
Polarization :	±45°	±45°	±45°
Gain (dBd/dBi) :	15.7/17.8	15.8/17.9	15.9/18
Azimuth BW (Deg.):	67	65	63
Elevation BW (Deg.):	7	6.5	6
Beam Tilt (Deg.):	2	2	2
USLS* (dB) :	18	19	17
Front-To-Back Ratio* (dB) :	28	30	30
Isolation (dB) :	>30	>30	>30
VSWR :	<1.4:1	<1.4:1	<1.4:1
PIM3 @ 2 x 20w (dBc) :	-150	-150	-150
Max. Input Power (Watts) :	250	250	250
Impedance (Ohms) :	50	50	50
Lightning Protection :	DC Ground	DC Ground	DC Ground

MECHANICAL

Weight :	5.9 kg (13.2 lb)
Dimensions (LxWxD) :	1,389 x 173 x 89 mm (54.7 x 6.8 x 3.5 in)
Max. Wind Area :	0.12 m ² (1.3 ft ²)
Max. Wind Load (@ 100 mph) :	449.2 N (101 lbf)
Max. Wind Speed :	241 km/h (150 mph)
Hardware Material :	Galvanized Steel
Connector Type :	7-16 DIN - Female (2, Bottom)
Color :	Off White
Standard Mounting Hardware :	602030A
WeatherShield™ Enclosure: (Must order separately)	AWE-A12





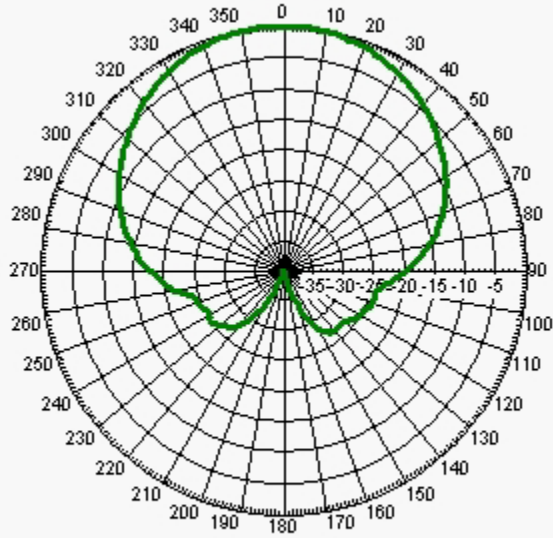
UMWD-06516-2DH

DualPol® Antenna

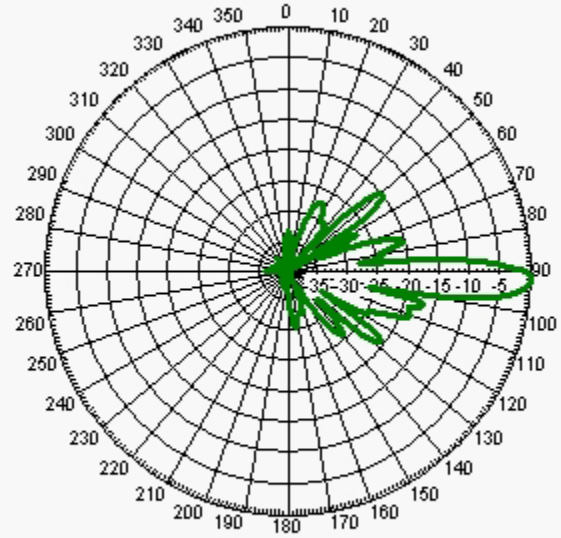
Decibel®
Base Station Antennas

AZIMUTH PATTERN

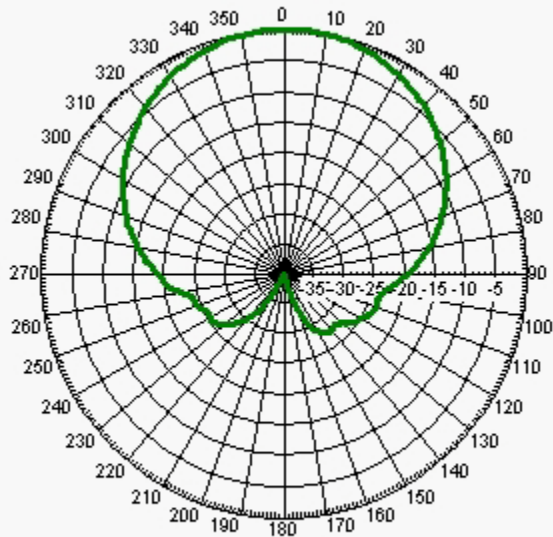
ELEVATION PATTERN



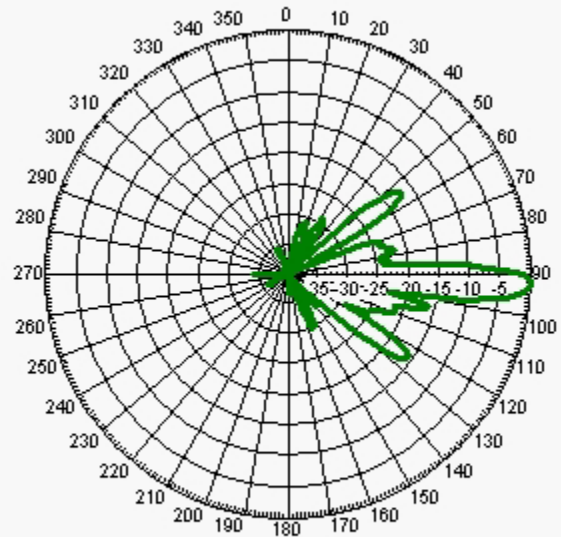
Freq: 1785 MHz, Tilt: 2



Freq: 1785 MHz, Tilt: 2



Freq: 1920 MHz, Tilt: 2



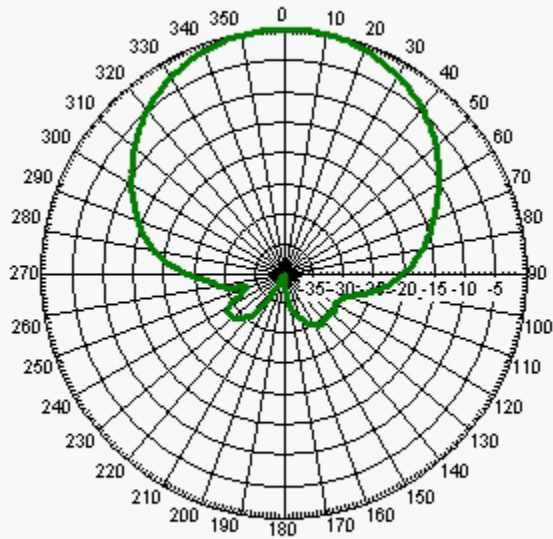
Freq: 1920 MHz, Tilt: 2



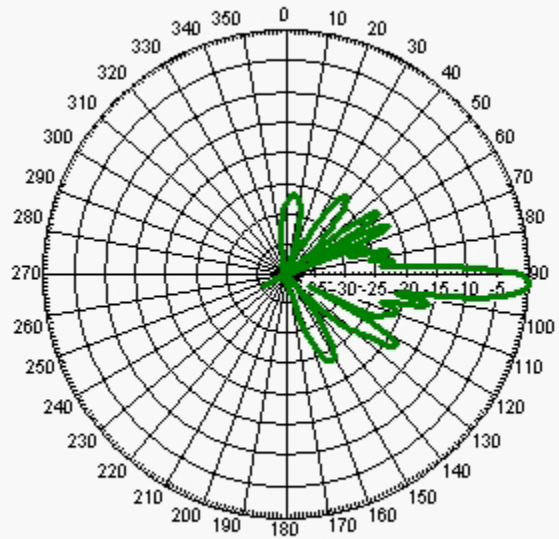
UMWD-06516-2DH

DualPol® Antenna

Decibel®
Base Station Antennas



Freq: 2110 MHz, Tilt: 2



Freq: 2110 MHz, Tilt: 2