



DB810KT3E-XC

Omni Antenna

Decibel®
Base Station Antennas

- Omnidirectional coverage
- Rugged, durable construction, heavy duty radome for minimum tip deflection
- Lightning resistant, with large diameter conductor extending top to bottom
- Invert mountable

ELECTRICAL

| | |
|----------------------------|-----------|
| Frequency (MHz) : | 824 - 896 |
| Polarization : | Vertical |
| Gain (dBd/dBi) : | 10/12.1 |
| Azimuth BW (Deg.): | 360 |
| Elevation BW (Deg.): | 6 |
| Beam Tilt (Deg.): | 3 |
| VSWR : | <1.5:1 |
| Max. Input Power (Watts) : | 500 |
| Impedance (Ohms) : | 50 |
| Lightning Protection : | DC Ground |

MECHANICAL

| | |
|------------------------------|--|
| Weight : | 16.3 kg (36 lb) |
| Dimensions (LxUO) : | 4,420 x 76 mm (174 x 3 in) |
| Max. Wind Area : | 0.16 m ² (1.7 ft ²) |
| Max. Wind Load (@ 100 mph) : | 418.1 N (94 lbf) |
| Max. Wind Speed : | 201 km/h (125 mph) |
| Hardware Material : | Galvanized Steel |
| Connector Type : | 7-16 DIN - Female (1, Bottom) |
| Color : | Horizon Blue |
| Standard Mounting Hardware : | DB5091-3 |



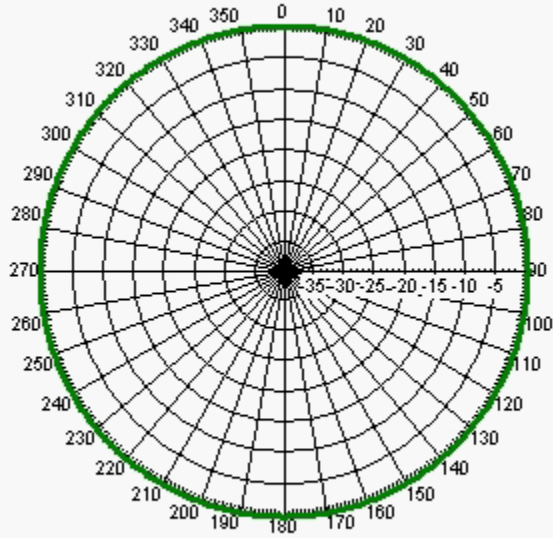


DB810KT3E-XC

Omni Antenna

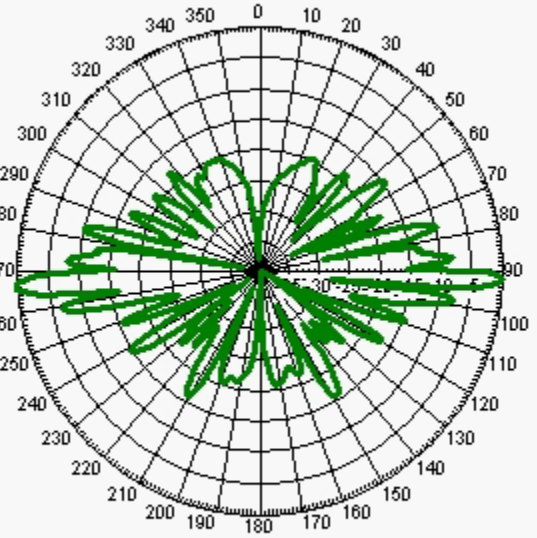
Decibel®
Base Station Antennas

AZIMUTH PATTERN



Freq: 880 MHz, Tilt: 3

ELEVATION PATTERN



Freq: 880 MHz, Tilt: 3