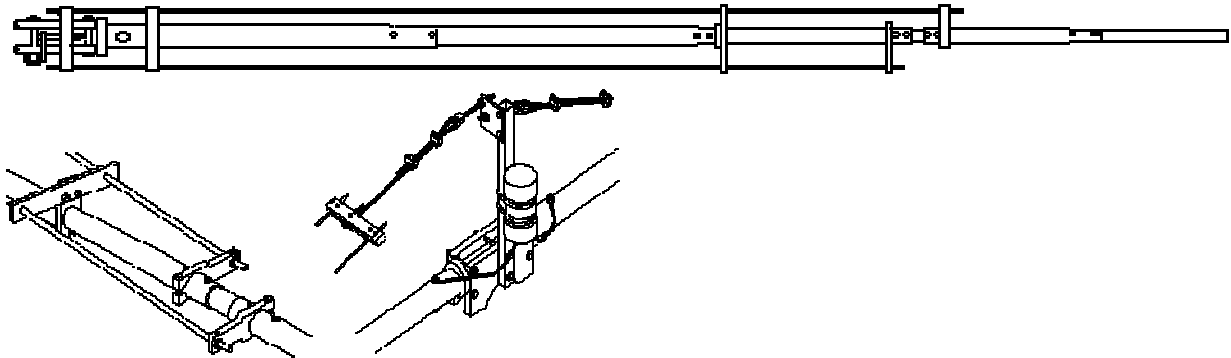


# 40M1L Rotatable Dipole



## SPECIFICATIONS

Model	40M1L
Frequency range	6.9 TO 10 MHz
Beamwidth	150 KHz x 2:1 VSWR
Gain	0 dBd
Impedance	50 OHMS Nominal
Balun / Type	1:1 Supplied / Teflon COAX
Power Handling	3 KW
Element length	46 FT.
Element diameter	1-1/2", 1-1/4", 1" and 3/4" Tips
Mounting	On 3" Boom or on 2" Mast
Wind Area / Survival	3 SQ. FT. / 100 MPH
Weight / ShipWt.	22 LBS. / 25 LBS. UPS

## FEATURES

This simple antenna combines 15 years of design and field experience with CNC machined parts to become the worlds best rotatable, reduced size dipole. Everything we have learned about linear loaded dipoles and structural reliability has been designed into the 40M1L. The center support is formed from two 1/2 inch thick aluminum plates sandwiched around a solid 1-1/4 inch fiberglass rod. There is nothing here to weaken or break from the effects of sun, wind or ice loading. The linear loading elements have been lifted slightly above the main element to eliminate the tension/compression problems of other designs. The center post supports and tensions the linear loading and lifts the whole element slightly virtually eliminating droop. Machined linear shorting bars allow the 40M1L to be tuned to any 150 KHz band segment from 6.9 to 10 MHz. A Husky 1:1 coaxial balun delivers all your transmit power to the antenna with no core saturation or shield radiation. Since this IS the driven element from our other loaded 40 meter beams, it can be used as a beam by simply adding more dipoles. If you can't rotate a long boom, consider the advantages of stacking dipoles vertically for more gain and low radiation angle. The possibilities are intriguing!! Explore the versatility of the 40 meter band. Get started with the best dipole, the 40M1L.