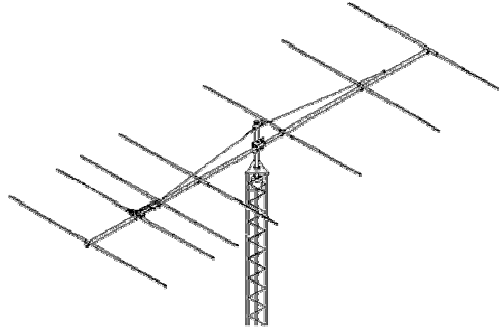


10M7 HF Monoband Yagi



SPECIFICATIONS

Model	10M7
Frequency	28.0 to 29.0 MHz
Gain	10.25 dBd
Front to Back	25 dB
Beamwidth	E=43° / H=50°
VSWR	1.2:1 Typical
Feed Imp. / Conn	50 Ohms / SO-239
Power Handling	2500 Watts
Boom Length / Dia	44 Ft. / 2-1/2" X 2" Tips
Element Length / Dia	1", 3/4" & 1/2" Tips
Stacking Distance	35 Ft. Vertical
Turning Radius	26 Ft.
Wind Load	6 Sq. Ft.
Wind Survival	100 MPH

FEATURES

REDESIGNED FOR MORE GAIN AND LOWER WIND AREA!

The 10M7 was designed for the DX'er using computer optimization techniques. Performance is excellent on both the CW and phone. The pattern is sharp and clean reducing noise and QRM. the 10M7 is a band opener and closer. It makes 100 watts sound like a kW! Mechanically, CNC machined aluminum (6061-T6) ring clamps ground the elements to the boom and make assembly a snap. A hairpin type match couples the 5 kW 1: balun to the feed line. The antenna is completely DC grounded. Great effort has been put into making sure this antenna stays in the air for years to come while providing enjoyment and satisfaction along the way. The 10M7 is destined for the DX antenna HONOR ROLL!