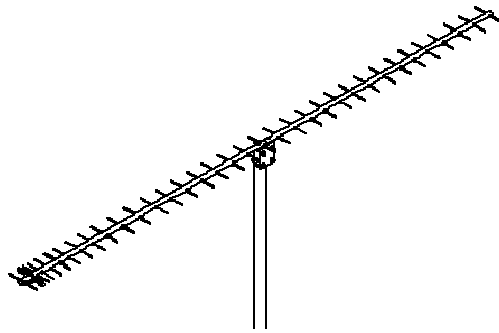


# 23CM35EZ



## SPECIFICATIONS

Model	23CM35EZ
Frequency range	1250 TO 1300
Gain over a dipole	18.4 dBd
Front to Back	21.3 dBd
Beamwidth	25 dB (see patterns)
VSWR	1.2:1 Typical (see plots)
Input Imp / Connector	50 Ohm / 'N' Fem.
Power Handling	600 WATTS
Boom length and diameter	10 ft (13 WL) / .75"
Mast Size	1-1/2" & 2"
Stacking Distance	28" W , 26" H
Wind Area / Survival	0.6 sq ft / 100 MPH
Weight / ShipWt.	2.5 LBS / 3 LBS

## FEATURES

The 23CM35EZ is the result of all the latest computer optimizing technology. Perfect balance is achieved with balun 'inside' the folded dipole itself. This eliminates connectors and cable and, as always with M2 driven elements, the whole assembly is sealed. When other designs will have succumbed to wind and weather, the 100 MPH-rated EZ will be as good as new and still performing to 'spec'!

The 'EZ' is an outstanding performer for 'hill-topping" or base station applications. Great for ATV, Repeaters and Oscar, too. Gain peaks in the weak signal Tropo and EME part of the band and tops any other antenna of comparable boom length! The directivity, gain and the clean pattern will astound you.